



Annual Report 2021

Norton Regional
HEALTH FOUNDATION

"Supporting You & Me"



Table Of Contents

03	Executive Director's Message
04	About the NRHF
05-06	The NRHF's Work in 2021
07	2021 Donors
08	Contact Us
09	Financial Statements

Executive Director's Message

About the NRHF

The NRHF's Work in 2021

2021 Donors

Contact Us

Financial Statements

Executive Director's Message



"No one has ever become poor by giving." - Anne Frank

Even the smallest gestures make a positive difference in others' lives. Another year of collective giving has led to organizational growth and development for the Norton Regional Health Foundation. On behalf of the Board of Directors, I would like to sincerely thank our donors for making Norton County Hospital a better place to receive health care and communities in Norton County stronger and healthier!

You will read throughout this report stories of success despite challenges of COVID-19, staffing shortages and other circumstances that plague the health care sector. During 2021, the NRHF funded equipment to support the Norton County Hospital obstetrics program - a contribution I benefited



from myself as a patient who delivered a baby girl in August! Not only did I receive top-notch care from my co-worker family, but my husband, baby and I were more comfortable due to the new room furniture, patient bed and infant warmer.

The NRHF's commitments extend to supporting other areas, such as a pain management table, scholarships, community education and projects through Blue Cross Blue Shield *Pathways to a Healthy Kansas*.

Supporting you and supporting me, the NRHF will enter 2022 stronger and just as invested in making Norton a destination to live, work and play. Thanks again for being part of the journey!

Katie

Katie Allen Wagner
Executive Director



NORTON REGIONAL
HEALTH FOUNDATION
2021 Annual Report

Executive Director's Message

About the NRHF

The NRHF's Work in 2021

2021 Donors

Contact Us

Financial Statements

About the NRHF

The Norton Regional Health Foundation is a 501(c)(3) nonprofit organization with a mission "to support the enhancement of quality health care for the residents of Norton County and surrounding counties by securing gifts and contributions for the support of the mission of Norton County Hospital." The Foundation also works with the Live Well Norton wellness coalition, a local volunteer-driven coalition with a focus on sustainable community wellness projects. Its motto: "Health is wealth for our economy and quality of life!"



The NRHF Board of Directors are as follows: Front row (L-R) Jill Edgett, vice president (liaison to the Norton County Hospital Board of Trustees); Karen Griffiths, secretary/treasurer (liaison to Live Well Norton); Jennifer Miller; and Megan Keiswetter. Back row (L-R) Katie Allen Wagner, executive director (ex-officio); Terry Nelson, president; Dennis Gilhousen; Jill Hall; Chris Tanner; and Gina Frack, former Norton County Hospital CEO (ex-officio).



The NRHF would like to welcome Brian Kirk as the new CEO of Norton County Hospital. He began his position in October 2021.



Executive Director's Message

About the NRHF

The NRHF's Work in 2021

2021 Donors

Contact Us

Financial Statements

The NRHF's Work in 2021

Supporting Health Care

The Norton Regional Health Foundation dedicated its resources to supporting new and growing services, as well as programs to improve patients' lives.



OB equipment and furniture:

In 2021, the NRHF fulfilled a commitment from 2020 to fund new equipment for the Norton County Hospital OB program, including epidural pumps and in-room furniture for nearly \$16,000. Another \$10,000 was dedicated to purchasing a birthing bed to support laboring mothers. This bed and the current bed provided for two functional delivery rooms that could be used at the same time.

Pictured at right: Representatives from First State Bank stand in one of the delivery rooms with nursing staff. They presented a donated gift at the end of 2021 to be given to the first baby born in 2022.



Pain management table:

The NRHF funded a request for a pain management table for \$9,800 in early 2021. This table will be used for multiple procedures, including Lumbar Epidural Steroid Injections (LESI) to help with back and leg pain.

Pictured at right: The pain management table is set up and ready for patients in the hospital's OR.



Stepping On program:

Norton County Hospital was able to successfully complete a Stepping On workshop in Spring 2021. During the seven courses of the workshop, participants learned about hazards that contribute to falls and how to modify their behavior and daily activities to prevent falls from occurring. The NRHF supported Stepping On by ensuring participants had healthy snacks, and helped with other supplies and marketing efforts.

Pictured at right: Stepping On participants learn from Julia Thompson, BSN, RN, instructor for the workshop.



Executive Director's Message

About the NRHF

The NRHF's Work in 2021

2021 Donors

Contact Us

Financial Statements

The NRHF's Work in 2021

Supporting Community Health

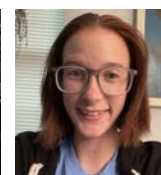
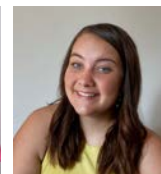
Health is a pillar of community sustainability. The Norton Regional Health Foundation wants to ensure options for healthy living are available in Norton County and that this area will continue to support health education and the health care workforce.



Scholarships:

The NRHF awarded \$6,500 in scholarships in 2021 to the following students:

- Carlie Voss, Almena, a nursing major at Fort Hays State University;
- Amy Wentz, Norton, a nursing major at Colby Community College;
- Lexi Kats, Lenora, a nursing major at Benedictine College;
- Melissa Leiker, Logan, a nursing major at Colby Community College;
- Taryn Kuhn, Norton, a biology major at Bethany College with plans to continue her education to become a physical therapist. She received the first-ever Marvin and Mary Wudtke Health Care Scholarship.



Kids' Cafe:

The NRHF accepts donations to feed children through the summer! The 2021 Norton Kids' Cafe saw growth in the number of community volunteers. Funding helped add fresh fruit to the shelf-stable meals provided by the Kansas Food Bank. In 2018, 460 meals were served through the summer. In 2019, 735 meals were served. A total of 935 meals were served in Summer 2020, and in 2021, 1096 meals were served. The meals distribution site continues to be the Norton First United Methodist Church.



Pathways to a Healthy Kansas:

Beginning in 2020, the Norton Regional Health Foundation and Live Well Norton have been working on projects through the *Pathways to a Healthy Kansas* grant, a multi-year grant from Blue Cross Blue Shield of Kansas. In 2021, this grant helped fund a grant coordinator position at Norton County Hospital, the 2021 Community Health Needs Assessment and up to 40 leadership training spots for hospital staff through the Kansas Leadership Center.



Executive Director's Message

About the NRHF

The NRHF's Work in 2021

2021 Donors

Contact Us

Financial Statements



2021 Donors

Developing and maintaining excellence in the Norton Regional Health Foundation's efforts can be credited to private gift support and grant funding. This list recognizes private gift supporters from Jan. 1, 2021 through Dec. 31, 2021. The Norton Regional Health Foundation extends its sincere appreciation to the following individuals, businesses and organizations:

Legacy Society Donor (\$50,000+)

- Lester Fredde Estate, Norton

Visionary Level (\$25,000 - \$49,999)

Leader Level (\$10,000 - \$24,999)

- Stuart & Cathy Barnes,
Longmont, CO

Builder Level (\$5,000 - \$9,999)

- Terry & Marcia Nelson, Almena

Patron Level (\$2,500 - \$4,999)

Pacesetter Level (\$1,000 - \$2,499)

Sustainer Level (\$500 - \$999)

- Doug & Karen Griffiths, Norton
- Anthony Knoll Family, Norton
- Brock & Jennifer Miller, Norton
- Tate & Dr. Theresia Neill, Norton

Partner Level (\$250 - \$499)

- Russ & Gina Frack, Norton
- Rodney & Janice O'hare, Norton
- Eric & Katie Wagner, Phillipsburg

Sponsor Level (\$100 - \$249)

- Alan & Kathryn Berndt, Lincoln, NE
- Sherman & Shirley Blocher, Lincoln, NE
- Jill Edgett, Lenora
- Patrick & Jill Hall, Norton
- Mitch & Shannan Hempler, Norton
- Logan & Megan Keiswetter, Norton
- Bryce & Valerie Marble, Norton
- Ian & Dr. Miranda McKellar, Norton
- Dr. Lamont & Pam Shirk, Norton
- Doris Yeager, Norton

Friend Level (\$1 - \$99)

- Tyrel & Klare Bliss, Almena
- Von & Kristine Fahrenbruch, Norton
- Ken & Jenn Fisher, Norton
- Rose Garrison, Norton
- Jerry & Kay Hawks, Norton
- Larry & Terry Hillman, Norton
- Kellen & Emily Jacobs, Norton
- Sean & Monica Kats, Lenora
- Melvin & Judy Luft, Norton

Friend Level (\$1 - \$99) (continued)

- Ray & Ruth Mizell, Norton
- Carol Otter, Norton
- Eric & Jennie Patterson, Norton
- Mike & Leslie Pfannenstiel,
Norton
- Greg & Heather Saville,
Phillipsburg
- Norman & Paula Strayer, Norton
- Ron & Gloria Zwickle, Norton

These Businesses/Organizations also contributed at the following levels in 2021:

Legacy Society Donor (\$50,000+)

Trailblazer Level (\$25,000 - \$49,999)

Executive Level (\$10,000 - \$24,999)

- First State Bank

Associate Level (\$1,000 - \$4,999)

- F&F Iron & Metal Co.

Investor Level (\$250 - \$999)

- Bomgaars

Advocate Level (\$249 and less)

- Jamboree Foods
- Norton Correctional Facility
Employee Use Fund

Notes and Disclaimer: Donor recognition levels include contributions from cash and gift-in-kind donations. Donor recognition is not a validation of amount claimed by donor for income tax charitable deduction purposes. Receipts are sent to donors when the gift is made. We appreciate this generous support of the Norton Regional Health Foundation, and we want to recognize donors accordingly with 100 percent accuracy. If there is an error, please contact the Foundation at 785-877-3351.

Executive Director's Message

About the NRHF

The NRHF's Work in 2021

2021 Donors

Contact Us

Financial Statements

Contact Us

Further Information

More information about the Norton Regional Health Foundation can be found online. Visit the Norton County Hospital website at www.ntcohosp.com, and click the "Foundation" tab.

Ways to Give

Donations can come in a variety of formats! Donors are encouraged to contact the NRHF if interested in contributing through: Stocks, Commodities, Real Estate, Life Insurance, Memorials, Estate Plans, Retirement Plans and Other Assets/Planned Giving. Donors can also participate in giving programs such as AmazonSmile or make a gift on the website through PayPal.

Upcoming Projects

One major project in 2022 is purchasing new inpatient beds. These new beds will enhance patient safety and comfort, and will also create many efficiencies for staff. Thank you to those who contributed to this project, including during Norton County Match Day in July 2021! The NRHF also continues to work on funding new equipment for Radiology. A special thanks to the Norton County Commissioners for their assistance in purchasing new x-ray equipment as well. The NRHF can match your area of interest with a health need!



785-877-3351



Email Katie Allen Wagner, Executive Director
kallen@ntcohosp.com



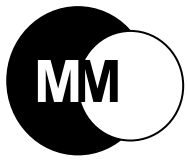
www.ntcohosp.com (Foundation tab)



**NORTON REGIONAL
HEALTH FOUNDATION**
2021 Annual Report

NORTON REGIONAL HEALTH FOUNDATION, INC.
NORTON, KANSAS
ACCOUNTANT'S COMPILATION REPORT WITH FINANCIAL STATEMENTS AND SELECTED INFORMATION
FOR THE FISCAL YEAR ENDING DECEMBER 31, 2021

MAPES & MILLER LLP
CERTIFIED PUBLIC ACCOUNTANTS
NORTON, KANSAS



Mapes & Miller LLP
Certified Public Accountants

418 E. Holme, Norton, KS 67654-1412
Phone: 785-877-5833 Email: mmcpas@ruraltel.net

Members of the American Institute of Certified Public Accountants
and the Kansas Society of Certified Public Accountants

A PARTNERSHIP OF PROFESSIONAL CORPORATIONS

JOHN D. MAPES, CPA, CHTD
DENIS W. MILLER, CPA, PA
THOMAS B. CARPENTER, CPA, PA
DON E. TILTON, CPA, PA
BRIAN S. THOMPSON, CPA, PA
REBECCA A. LIX, CPA, PA
STEPHANIE M. HEIER, CPA, PA

Accountant's Compilation Report

Norton Regional Health Foundation, Inc.
Norton, KS 67654

Management is responsible for the accompanying financial statements of Norton Regional Health Foundation, Inc. (a non-profit corporation) which comprise the statement of assets, liabilities, and net assets-cash basis as of December 31, 2021 and the related statement of revenues and changes in net assets-cash basis for the fiscal year then ending, and the related statement of functional expenses-cash basis for the fiscal year then ending, and for determining that the cash basis of accounting is an acceptable financial reporting framework. We have performed a compilation engagement in accordance with Statements on Standards for Accounting and Review Services promulgated by the Accounting and Review Services Committee of the AICPA. We did not audit or review the financial statements nor were we required to perform any procedures to verify the accuracy or completeness of the information provided by management. Accordingly, we do not express an opinion, a conclusion, nor provide any form of assurance on these financial statements.

The financial statements are prepared in accordance with the cash basis of accounting, which is a basis of accounting other than accounting principles generally accepted in the United States of America.

Management has elected to omit substantially all of the disclosures ordinarily included in financial statements prepared in accordance with the cash basis of accounting. If the omitted disclosures were included in the financial statements, they might influence the user's conclusions about the Foundation's assets, liabilities, net assets, revenues, and expenses. Accordingly, the financial statements are not designed for those who are not informed about such matters.

Mapes & Miller LLP

January 11, 2022

Norton Regional Health Foundation, Inc.
Statement of Assets, Liabilities, and Net Assets-Cash Basis
As of December 31, 2021

	<u>Restricted</u>	<u>Unrestricted</u>	<u>Total</u>
ASSETS			
Cash and Cash Equivalents			
First State Bank-Checking & Money Market	85,560.50	79,687.84	165,248.34
FC Stone-Bank Deposits	1,001.03	12,829.82	13,830.85
LPL-Bank Deposits	6,993.82	4,592.32	11,586.14
Total Cash and Cash Equivalents	<u>93,555.35</u>	<u>97,109.98</u>	<u>190,665.33</u>
Investments			
Common Stock	16,354.47	124,045.10	140,399.57
Exchange Traded & Closed End Funds	18,539.54	55,852.65	74,392.19
Mutual Funds	172,160.49	84,808.96	256,969.45
Total Investments	<u>207,054.50</u>	<u>264,706.71</u>	<u>471,761.21</u>
TOTAL ASSETS	<u><u>300,609.85</u></u>	<u><u>361,816.69</u></u>	<u><u>662,426.54</u></u>
Liabilities and Net Assets			
Net Assets	232,067.85	285,587.93	517,655.78
Change in Net Assets	<u>68,542.00</u>	<u>76,228.76</u>	<u>144,770.76</u>
Total Net Assets	<u>300,609.85</u>	<u>361,816.69</u>	<u>662,426.54</u>
TOTAL LIABILITIES & NET ASSETS	<u><u>300,609.85</u></u>	<u><u>361,816.69</u></u>	<u><u>662,426.54</u></u>

Norton Regional Health Foundation, Inc.
Statement of Revenue, Expenses, and Changes in Net Assets-Cash Basis
For the Fiscal Year to Date Ending December 31, 2021

	<u>Restricted</u>	<u>Unrestricted</u>	<u>Total</u>
Revenue			
Grants	72,500.00	0.00	72,500.00
Contributions	26,472.83	79,483.29	105,956.12
Release of Restriction on Net Assets	-538.46	538.46	0.00
Investment Income			
Gain (Loss) on Sale of Securities	31,139.14	11,944.28	43,083.42
Dividends	4,530.55	3,674.95	8,205.50
Interest	0.49	147.54	148.03
Total Investment Income	<u>35,670.18</u>	<u>15,766.77</u>	<u>51,436.95</u>
Total Revenue	<u>134,104.55</u>	<u>95,788.52</u>	<u>229,893.07</u>
Expenses			
Program Expenses			
Community Healthcare Enhancement	64,224.38	15,591.00	79,815.38
Total Program Expenses	<u>64,224.38</u>	<u>15,591.00</u>	<u>79,815.38</u>
Support Services			
Management & General	1,338.17	3,968.76	5,306.93
Total Support Services	<u>1,338.17</u>	<u>3,968.76</u>	<u>5,306.93</u>
Total Expenses	<u>65,562.55</u>	<u>19,559.76</u>	<u>85,122.31</u>
Change in Net Assets	<u><u>68,542.00</u></u>	<u><u>76,228.76</u></u>	<u><u>144,770.76</u></u>

Norton Regional Health Foundation, Inc.
Statement of Functional Expenses-Cash Basis
For the Fiscal Year to Date Ending December 31, 2021

	<u>Program Services</u> <u>Community Healthcare Enhancement</u>	<u>Supporting Services</u> <u>Management and General</u>	<u>Total</u>
Operations			
Office Supplies	0.00	53.47	53.47
Total Operations	<u>0.00</u>	<u>53.47</u>	<u>53.47</u>
Fees			
Accounting Fees	0.00	2,433.00	2,433.00
Business Registration Fees	0.00	40.00	40.00
Consulting Fees	0.00	0.00	0.00
Legal Fees	0.00	0.00	0.00
Other Fees	0.00	0.00	0.00
Investment Fees	0.00	2,098.02	2,098.02
Foreign Tax Withheld	0.00	93.31	93.31
Total Fees	<u>0.00</u>	<u>4,664.33</u>	<u>4,664.33</u>
Community Relations			
Advertising/Public Relations	0.00	205.73	205.73
Postage	0.00	0.00	0.00
Travel, Conf, Staff & Board Development	0.00	100.00	100.00
Total Community Relations	<u>0.00</u>	<u>305.73</u>	<u>305.73</u>
Special Projects			
Health Equipment/Infrastructure Improvements			
Hospital Equipment	34,706.00	0.00	34,706.00
Other	207.00	0.00	207.00
Scholarships	6,500.00	0.00	6,500.00
Supplies			
Kicks on the Bricks	0.00	0.00	0.00
Stepping On	132.00	0.00	132.00
Pathways Grant	37,652.70	0.00	37,652.70
Kids' Café	901.08	0.00	901.08
Total Special Projects	<u>80,098.78</u>	<u>0.00</u>	<u>80,098.78</u>
Total Expenses	<u><u>80,098.78</u></u>	<u><u>5,023.53</u></u>	<u><u>85,122.31</u></u>

Norton Regional Health Foundation, Inc.
Selected Information-Substantially All Disclosures Ordinarily Required by the
Cash Basis of Accounting Are Not Included

1. Summary of Significant Accounting Policies

Nature of Activities

The Norton Regional Health Foundation, Inc, a non-profit corporation, was formed in 2016 under the laws of the State of Kansas. It is headquartered in Norton, Kansas. The mission of the Norton Regional Health Foundation, Inc., is to support the enhancement of quality healthcare for the residents of Norton County and the surrounding counties by securing gifts and contributions for the support of the mission of Norton County Hospital.

Basis of Accounting

The records of the Norton Regional Health Foundation, Inc. are maintained on the cash basis of accounting and the accompanying financial statements have been prepared on that basis. Revenues and expenses are recognized when incurred. Noncash transactions are not recognized. The cash basis of accounting differs from generally accepted accounting principles primarily because certain revenues are recognized when received rather than when earned and certain expenses are recognized when paid rather than when the obligation is incurred.

Contributions

Contributions received are recorded as unrestricted or restricted support, depending on the existence and/or nature of the donation restrictions.

Contributions-In-Kind

In-kind or non-cash contributions are not disclosed in the financial statements. The Foundation keeps a record of all in kind contributions, and accounts for in kind contributions at fair market value of the contributed nonfinancial gifts as prescribed in FASB *Accounting Standards Codification* 820. The Foundation received contributions-in-kind with a market value of \$17,878 from First State Bank for Physician Recruitment Assistance.

Cash and Cash Equivalents

For the purpose of the statement of assets, liabilities, and net assets-cash basis, the Norton Regional Health Foundation, Inc. defines cash as consisting of cash on hand, demand deposits, and money market accounts.

Investments

For the purpose of the statement of assets, liabilities, and net assets-cash basis, the Norton Regional Health Foundation, Inc. includes investments at their original cost basis.

Federal Income Taxes

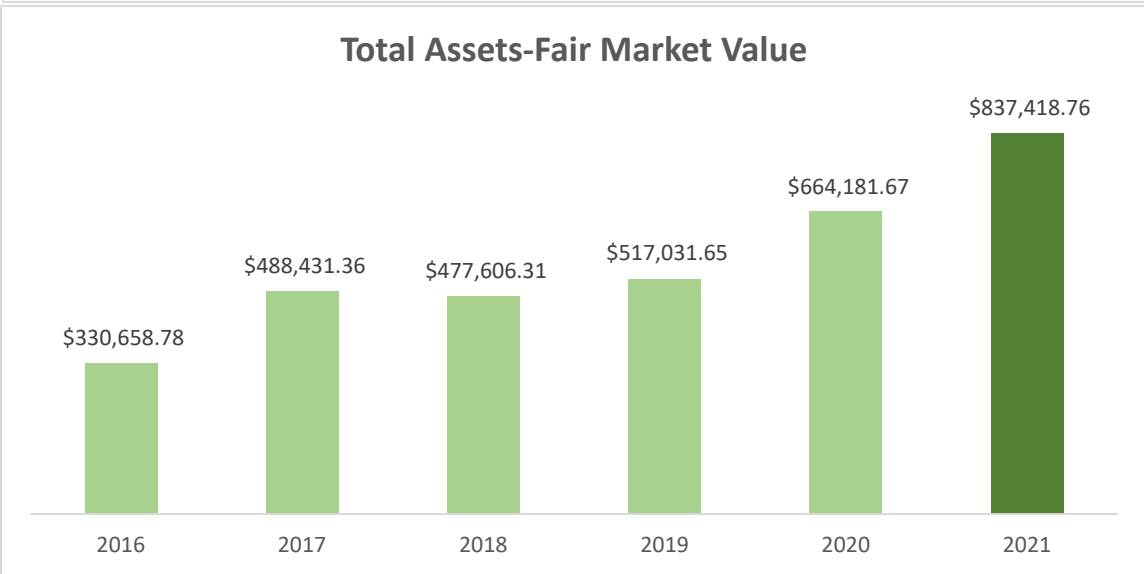
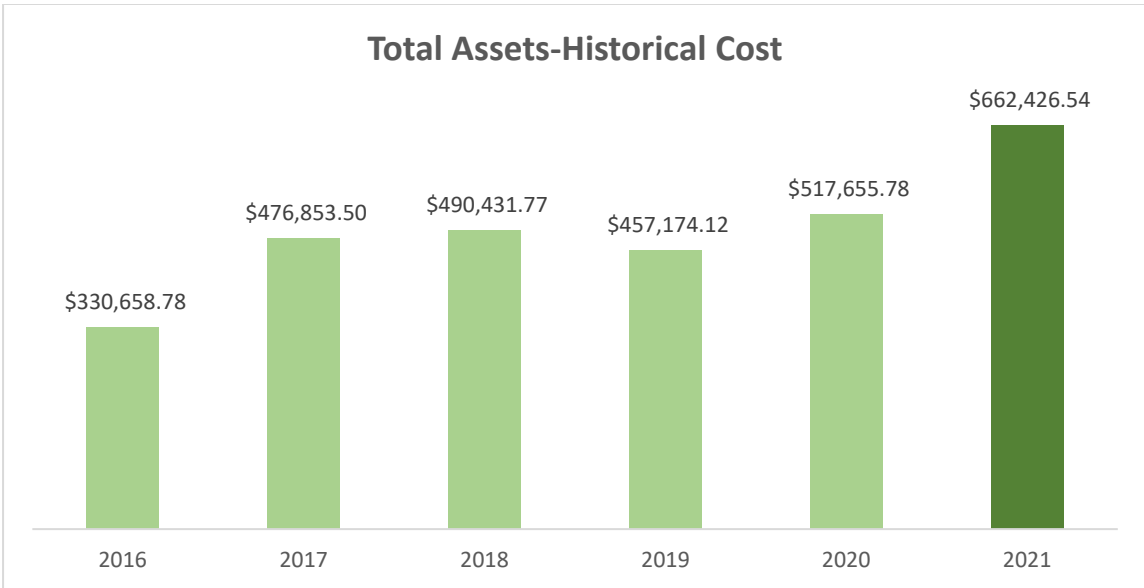
The Norton Regional Health Foundation, Inc. is exempt from Federal income tax under provisions of Section 501(c)3 of the Internal Revenue Code.

2. Restrictions on Net Assets

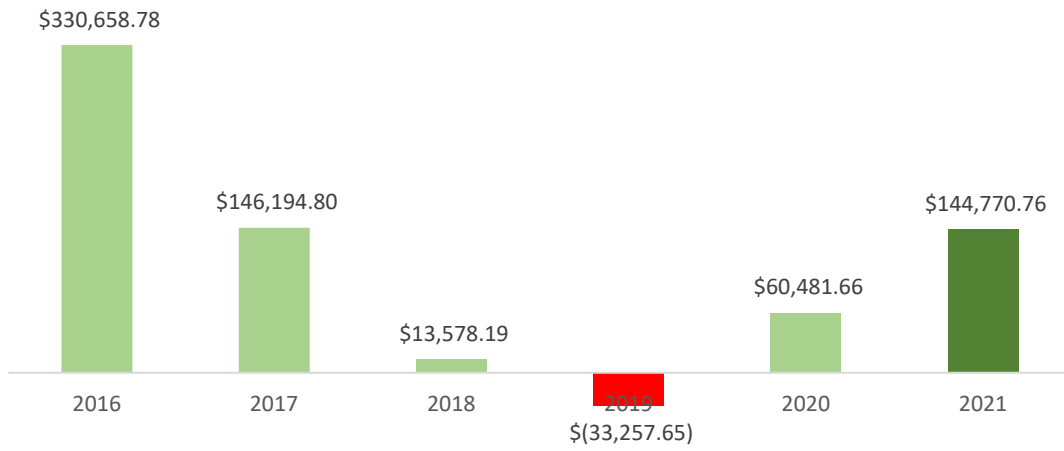
As described above, contributions are recorded as unrestricted or restricted support, depending on the existence and/or nature of the donation restrictions.

Restricted assets are available for the following purposes

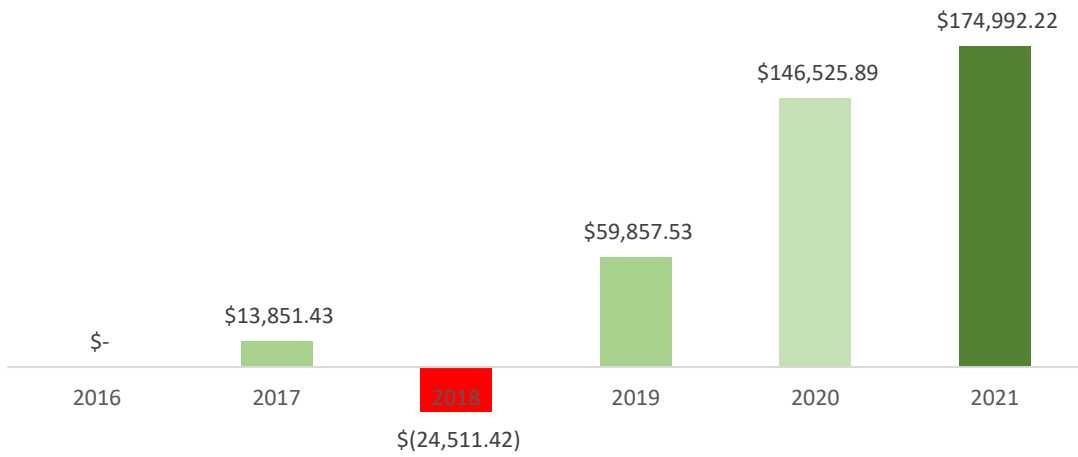
Nursing Scholarships	\$188,414.87
Health Care Scholarships	\$25,638.23
Capital Improvements	\$16,861.52
Mammography	\$396.31
Pathways to a Healthy Kansas	\$65,994.33
Kids Café Program	\$1,298.72
Armory Drive Trail	\$120.43
Live Well Norton Projects	\$1,885.44
Total Restricted Net Assets	<hr/> \$300,609.85



Change in Net Assets



Unrealized Gain (Loss) on Securities



Investment Returns (Net of Fees)

